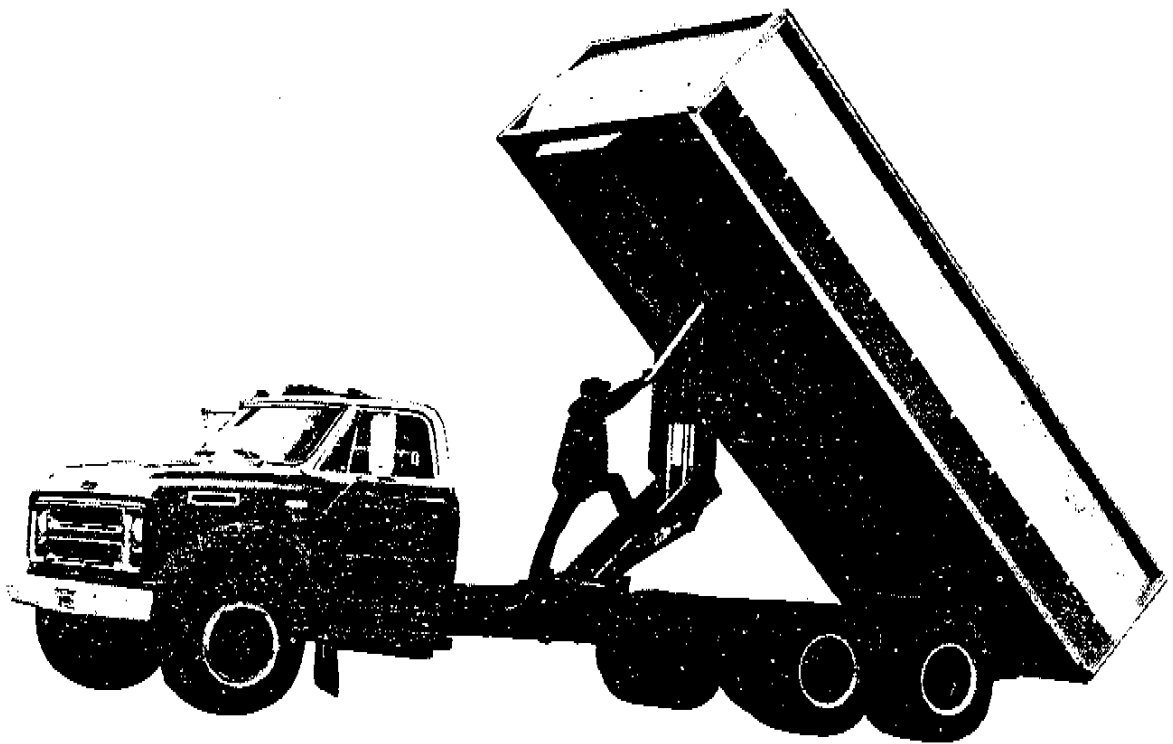


OPERATOR'S MANUAL

INSTRUCTIONS and REPAIR PARTS LIST

**FOR ASSEMBLING AND OPERATING
THE LO-BOY MODEL ST-560 TRUCK HOIST**



Read these instructions

Save them for reference

Crysteel Manufacturing, Inc.

Telephone: 507-726-2728

Highway 60 East
LAKE CRYSTAL, MINNESOTA 56055

LO-BOY ST-560 TRUCK HOIST

DATE PURCHASED _____
 SERIAL NUMBER ON HOIST _____
 SERIAL NUMBER ON CYLINDER _____
 SERIAL NUMBER ON PUMP _____

FOREWORD

This manual contains information necessary for the proper installation and operation of this truck hoist. Study it carefully before attempting to mount the hoist. With proper installation and maintainance the Lo-Boy Model ST-560 truck hoist will give many years of trouble free service.

When ordering parts, be sure to give serial number of both pump and cylinders. The serial number of the pump is found on the plate on the front of the pump. The serial number of the cylinder is stamped on the barrel of the cylinder near the base. For future reference, copy these numbers NOW in the space provided above. Order parts by number and description as given in the parts listing in this manual.

If you prefer, parts for the pump may be ordered directly from the manufacturer of the pump as per the information supplied with the pump, which can be considered to be part of this manual. If you do this, specify that the built-in relief valve be set to operate at 3250 P.S.I. and that your pump is part of the Lo-Boy Model ST-560 truck hoist.

THE LO-BOY MODEL ST-560 TRUCK HOIST IS DESIGNED AND INTENDED FOR USE ON TANDEM AXLE TRUCKS WITH CAB-TO-TRUNION DIMENSIONS OF 102 INCHES THROUGH 168 INCHES AND BODY LENGTHS OF 14 FEET THROUGH 22 FEET.

KEEP THIS MANUAL IN A SAFE PLACE FOR FUTURE REFERENCE

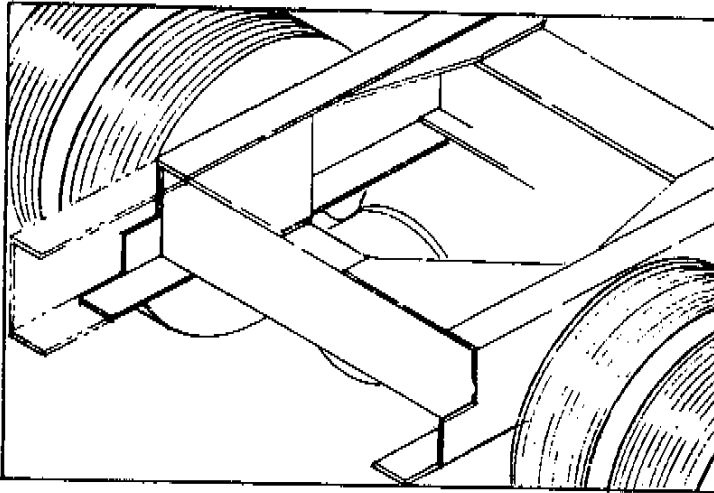
SAFETY FIRST

NEVER EXCEED THE G.V.W. (GROSS VEHICLE WEIGHT) RATING NOR THE G.A.W. (GROSS AXLE WEIGHT) RATING SPECIFIED FOR YOUR TRUCK.

LO-BOY ST-560 TRUCK HOIST

MOUNTING INSTRUCTIONS

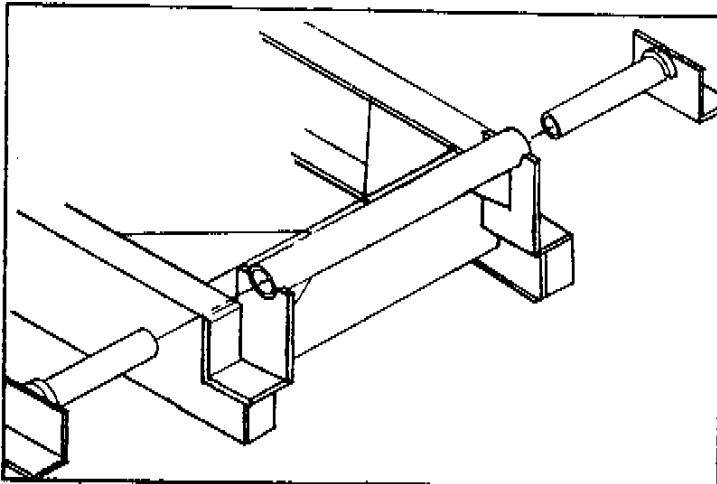
LOCATE REAR HINGE



The rear hinge is pre-assembled for ease of installation. Remove the extension tube brackets No. 4 from the center assembly No. 5. Mark the truck frame as shown by using the center assembly as a guide. Mark the top flange $\frac{1}{2}$ inch behind the rear truck frame crossmember. (This will usually be from 42 to 45 inches behind the C.T.) The rear hinge should never be more than 50 inches behind the C.T. Mark straight down 5 inches, back 5 inches, down to the bottom flange, then leave enough of the bottom flange intact to bend up later to box in the frame as shown.

TORCH-CUT THE FRAME AS MARKED

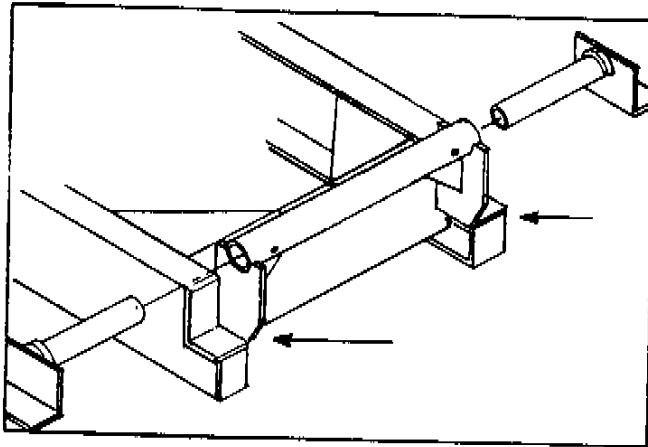
INSTALL REAR HINGE



Set the rear hinge in place. The top of the angle brackets of the center assembly No. 5 should be flush with the top of the truck frame. The vertical half inch plates of the hinge assembly should be against the rear surface of the truck frame crossmember. Check to make sure it is centered and square with the truck frame. Weld the rear hinge assembly very securely to the truck frame at all contact points, especially to the rear surface of the truck frame crossmember. If necessary, grind the weld smooth at the top of the truck frame. Bend the lower flange of the truck frame up to the hinge angle to box in the lower part of the truck frame and weld securely. Replace the extension tube brackets No. 4 in the center assembly No. 5 as far in as possible against the stops, so there will be NO SIDEPLAY in the rear hinge.

LO-BOY ST-560 TRUCK HOIST

LOCATE HOIST ON TRUCK FRAME

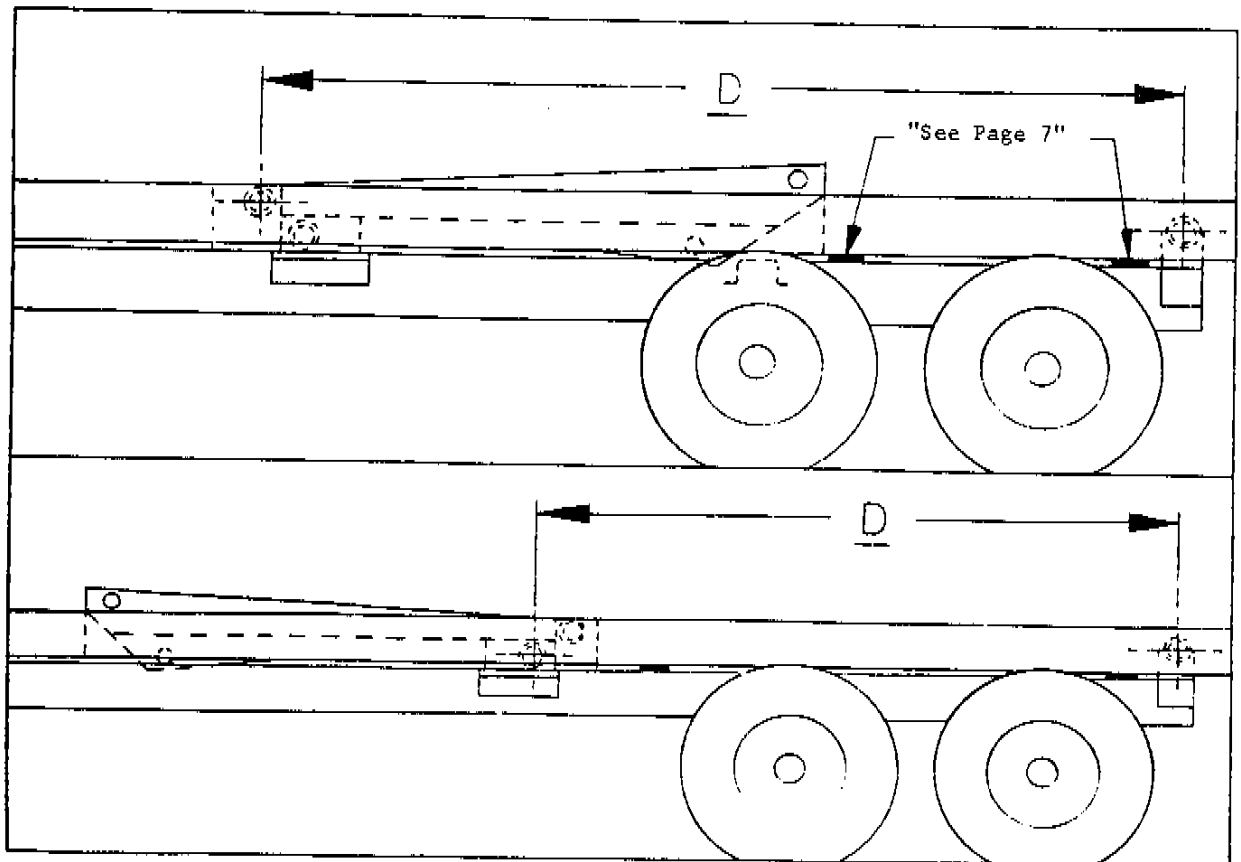


The rear end of the main hoist frame No. 3 is designed to rest on the truck frame crossmember approximately in line with the front edge of the front tires of the tandem. This will result in a normal installation with a dump angle of about 45 degrees. For steeper dump angles it can be mounted farther back. NOTE: In some cases the hoist may fit the truck frame better if it is mounted "backwards" as shown below. For dump angles steeper than 50 degrees, it will be necessary to trim the rear corners off the rear hinge as shown here, so the longbeams will not strike the hinge angle when hoisted.

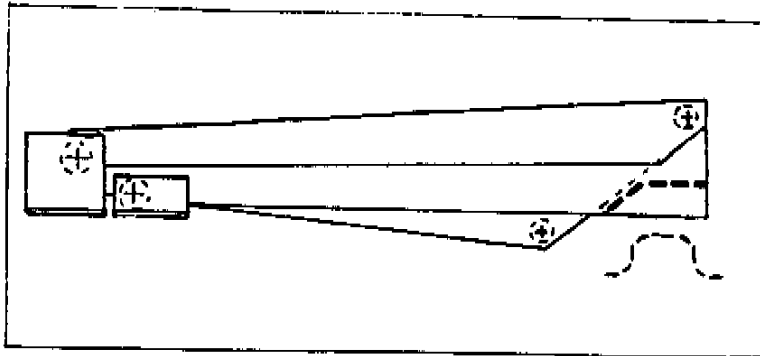
DETERMINE DUMP ANGLE

Measure the distance "D" as shown below from the center of the rear hinge tube to the center of the upper crosstube shown in the following chart:

100 inches - 60 degrees	115 inches - 51 degrees	130 inches - 45 degrees
105 inches - 56 degrees	120 inches - 49 degrees	140 inches - 42 degrees
110 inches - 53 degrees	125 inches - 47 degrees	150 inches - 40 degrees

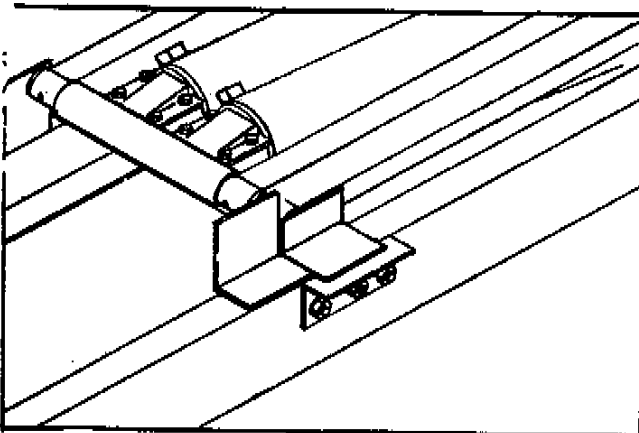


LO-BOY ST-560 TRUCK HOIST



SPECIAL INSTRUCTIONS FOR SOME INSTALLATIONS

1. If it is desired to lower the rear end of the hoist that rests on the truck frame crossmember, in order to avoid notching underbody crossmembers; this can be done by notching the rear of the hoist BEHIND THE SLANTED HEADPLATE as shown by the heavy dotted line. Notch these plates as required, trim the cut off pieces and weld them back on at a higher level. The hoist can be lowered as much as 4 inches this way IF THERE IS SUFFICIENT DRIVESHAFT CLEARANCE.
2. If it is desired to locate the hoist where there is not a truck frame crossmember to support the rear end of the hoist, add a new crossmember for this purpose. A piece of six inch channel will suffice for this.



MOUNT HOIST TO TRUCK FRAME

The angle brackets of the hoist must rest flat on truck frame. If rivets are encountered in truck frame and the hoist cannot be moved to clear them, countersink rivet heads into the brackets. Center the mounting angles No. 19 under the hoist brackets, clamp them in place and drill $21/32$ holes in truck frame. Bolt the mounting angles No. 19 to truck frame, using $5/8 \times 1 \ 3/4$ machine bolts and lockwashers. CAUTION: When drilling in truck frame, be careful of brakelines, wiring, etc. inside the truck frame.

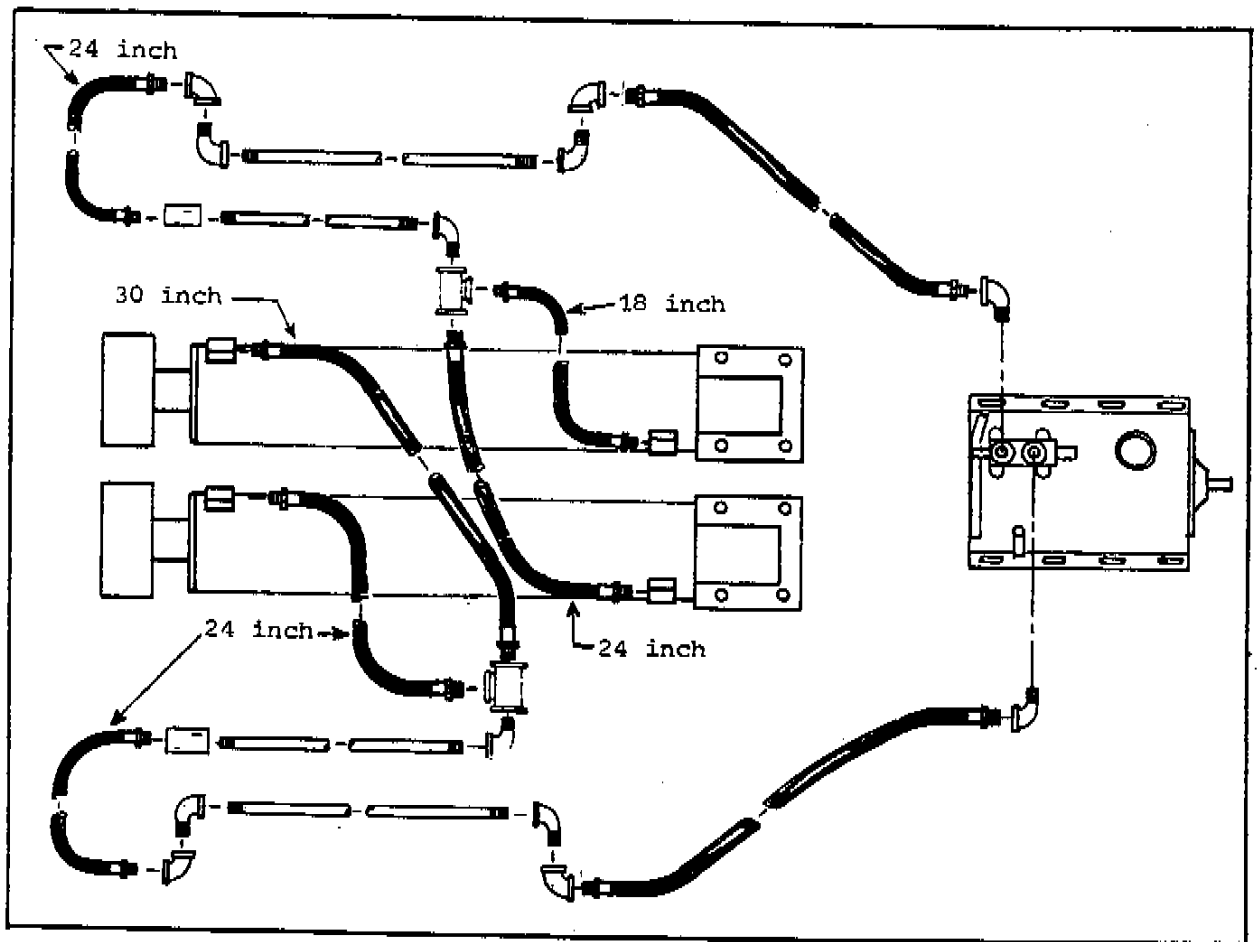
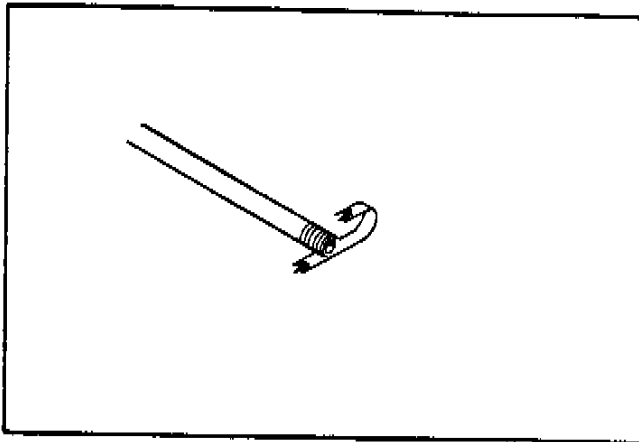
WELD BRACKETS TO MOUNTING ANGLES

Re-check to make sure hoist is centered and square with truck frame. Weld the angle brackets of the hoist very securely to mounting angles.

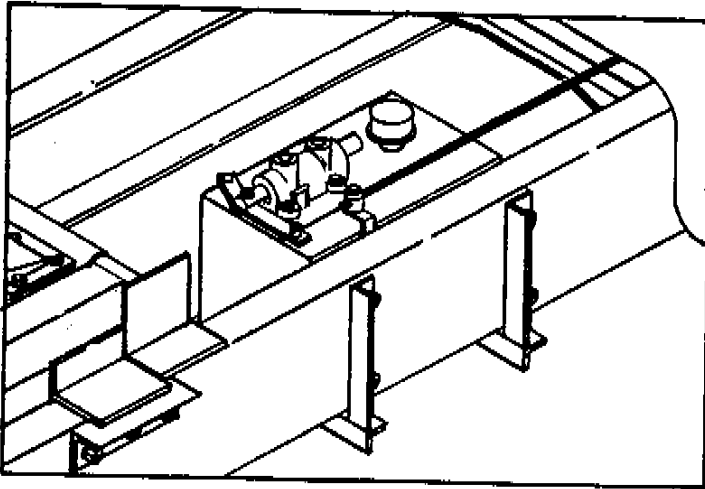
LO-BOY ST-560 TRUCK HOIST

PLUMBING AND USE OF TEFLON TAPE

Use teflon tape on all hydraulic connections. Properly done, this will assure absolutely leakproof connections. All connections are 3/8 inch pipe. One wrap of teflon tape is enough -- use it sparingly. Rather than cutting, break off about 2 inches of teflon tape. This provides a feathered edge, for easier assembly. Stretch it tight so that it sinks deeply into the threads. Be sure to wrap the tape in the same direction the fitting screws on so it will stay in place as the fitting is threaded on. It is not necessary to tighten the connections excessively.



LO-BOY ST-560 TRUCK HOIST



MOUNT HYDRAULIC PUMP

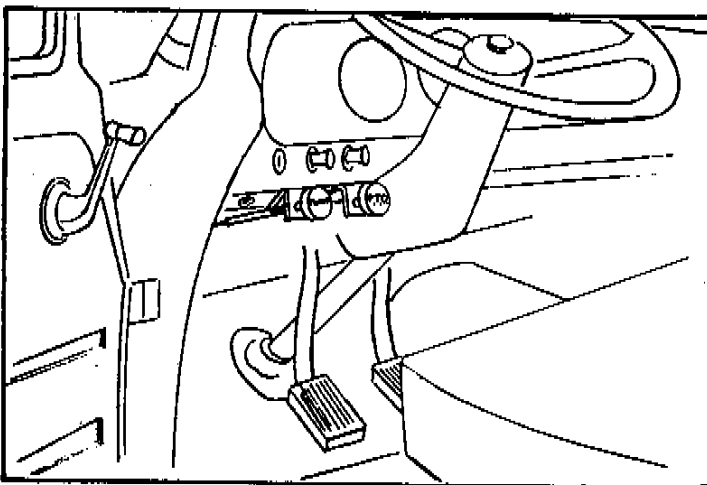
Temporarily clamp the pump mounting angles to the truck frame, with the pump inside the truck frame a few inches behind the cab. Check to be sure of sufficient clearance and that PTO driveshaft is long enough. In some cases it will be necessary to re-work the exhaust system for clearance. **UNDER NO CIRCUMSTANCES SHOULD THE ENGINE EXHAUSE BE PERMITTED TO BLOW DIRECTLY ONTO THE PUMP!** The PTO driveline must never exceed 15 degrees angularity. After locating the pump, drill 17/32 diameter holes through the truck frame and bolt tight, using 1/2 x 1-1/2 inch machine bolts and lock-washers.

ATTACH MOUNTING ANGLES TO PUMP

Determine on which side of the truck frame to mount the pump. (Same side as the PTO). Bolt the pump mounting angles No. 33 to the pump No. 20, using 3/8 x 7/8 machine bolts, flat washers and lock-washers.

ADD HYDRAULIC FLUID - 6 U.S. GALLONS

The capacity of the pump reservoir is 27 U.S. quarts. Six U.S. gallons (24 quarts) are required for proper operation. **KEEP IT CLEAN! USE CLEAN CONTAINERS, FUNNELS AND OTHER EQUIPMENT.** Use a quality hydraulic fluid of 150 SSU @ 100 degrees F. which contains corrosion and oxidation inhibitors and a foam depressant. For general use, a good quality SAE 10W non-detergent motor oil with the proper additives, or type A transmission fluid can be used.



INSTALL CABLE CONTROL NO. 23

Remove control wire from cable housing and oil inside of cable housing before installing. Attach control mounting angle No. 24 at a convenient location under the dash, using the 1/4 by 3/4 machine bolts and lock-washers. Install cable through firewall and connect to valve control lever. Check and adjust for proper operation. Be sure there are no sharp bends in cable.

LO-BOY ST-560 TRUCK HOIST

PLUMBING HYDRAULIC CYLINDERS

Study the plumbing diagram shown on page 5 very carefully and follow it EXACTLY! Remove port plugs from cylinders. Starting at the pipe tee No. 7 on the left (driver's) side on the inside of the upper hoist frame, run a 24 inch hose No. 12 through the front hole in the center tension bar of the hoist frame to the base end (front end) of the right hand cylinder; and an 18 inch hose No. 46 to the base end of the left cylinder. Starting again at the pipe tee No. 7 on the right side, run a 30 inch hose No. 47 through the rear hole in the center tension bar of the hoist, to the head (shaft) end of the left cylinder; and a 24 inch hose No. 12 to the head end of the right cylinder. The swivel end of all hoses should be connected to the cylinder ports. NOTE: Final tightening of hoses at the HEAD end of cylinders will be easier if left until later when the hoist is raised.

COMPLETE HYDRAULIC PLUMBING

On each side of the hoist, 24 inch hoses No. 12 are tucked inside the upper frame. One end is already connected inside the frame. Connect the other end to the elbow near the cylinder crosshead pin. (See lubrication photo on page 10). Install a 90 degree street elbow in each port of the pump valve. Connect the 36 inch hose No. 16 to the hoist hydraulic line on the same side of the truck as the pump. Connect the 42 inch hose No. 40 to the other side. Connect the hose on the left (driver's) side to the valve port nearest the rear of the truck, as shown on the plumbing diagram. Connect the other line to the front valve port. This is very important because the rear port has full hydraulic pressure, the front port only half as much pressure.

INSTALL PTO DRIVELINE

Install the long U-slip joint No. 48 on the pump driveshaft, and the short U-joint No. 30 on the PTO driveshaft so that the inner edge of the hub of each is flush with the end of the shaft. DO NOT TIGHTEN SETSCREWS. Measure the exact length of the square driveshaft No. 28 needed between the two U-joints so that the shaft will be flush with the inner edge of both hubs. Cut the square driveshaft to proper length with a hacksaw and grind off any burr. Insert shaft into the slipjoint hub. Slide both joints farther onto the shafts and insert the square driveshaft into the short U-joint hub. Re-locate the joints in their proper position. Tighten the setscrews No. 29 very tight and secure with a safety wire.

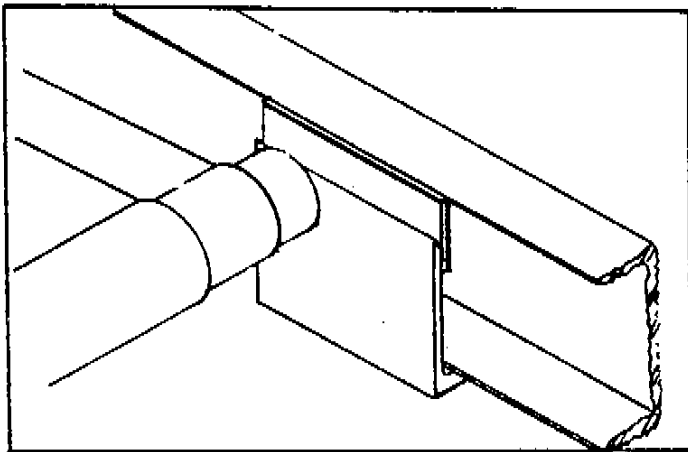
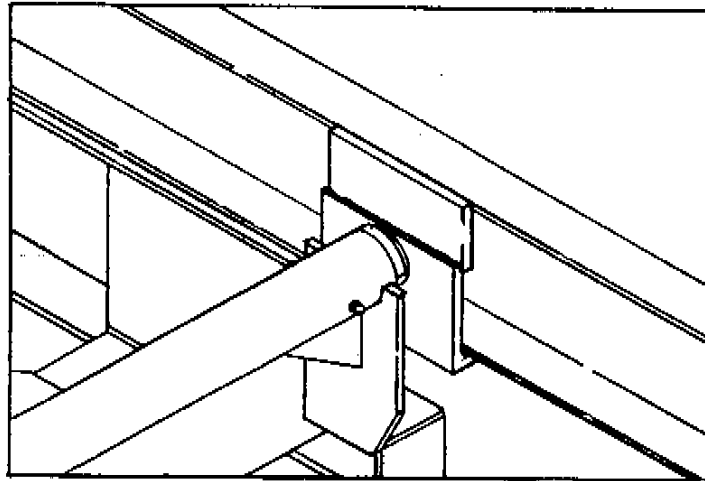
INSTALL TRUCK BODY

Assuming that steel longbeams are attached to the body, place the body in position on the truck. ALLOW AT LEAST TWO INCHES OF CLEARANCE BEHIND CAB. Depending upon the size of the longbeams and the mounting height of the hoist (See page 4), it may be necessary to do some notching of the underbody crossmembers. The design of the hoist is such that notching of crossmembers is minimized, and in most cases eliminated. Use the rivet strip mounting pads No. 8 between the longbeams and the truck frame. Use three on each side, spaced as shown on page 3. Weld them to the underside of the longbeams. Align body longbeams carefully with the truck frame.

 LO-BOY ST-560 TRUCK HOIST

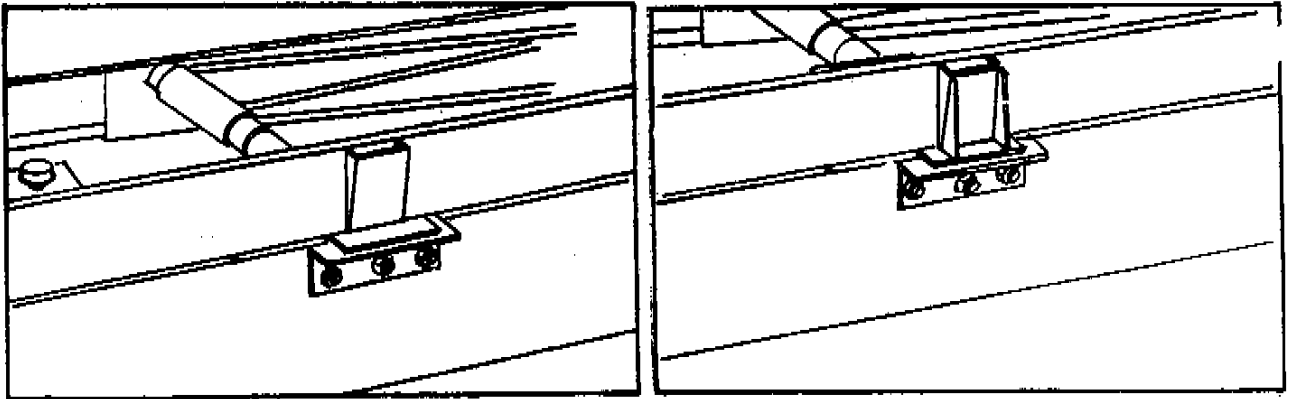
ATTACH LONGBEAMS TO REAR HINGE EXTENSION TUBE BRACKETS

Make sure longbeam extension tube brackets No. 4 are in tight against the stops. Weld the longbeams very securely to the brackets at the bottom. On the inside of the longbeams use the flat spacer No. 6, 3/8 x 3 x 7, to connect the upper flange of the longbeam channel to the top of the bracket as shown. Weld very securely to both the flange of the longbeam and the top of the extension tube bracket.


ATTACH LONGBEAMS TO HOIST LIFT BRACKETS

Weld the longbeams very securely to the angle lift brackets of the hoist. On the inside of the longbeams use the flat spacer No. 1, 3/8 x 2 x 7, to connect the upper flange of the longbeam channel to the top of the hoist lift bracket as shown. Weld the spacer securely to both the longbeam flange and the hoist bracket. These parts are more easily installed if the hoist is raised part way after welding the longbeams to the brackets at the bottom. **BEFORE WORKING UNDER A RAISED BODY BE SURE IT IS BLOCKED UP VERY CAREFULLY TO PREVENT THE POSSIBILITY OF AN ACCIDENT!!!**

 LO-BOY ST-560 TRUCK HOIST


INSTALL BODY GUIDES

The four body guides No. 14 are all identical. Weld one to each longbeam as shown, with the wide end of the body guide at the top and centered over the truck mounting brackets. Now weld the other pair of body guides to the truck mounting brackets, and tight against the first body guides as shown. There should be NO SIDE-PLAY between the body guides when the truck body is in the lowered position.

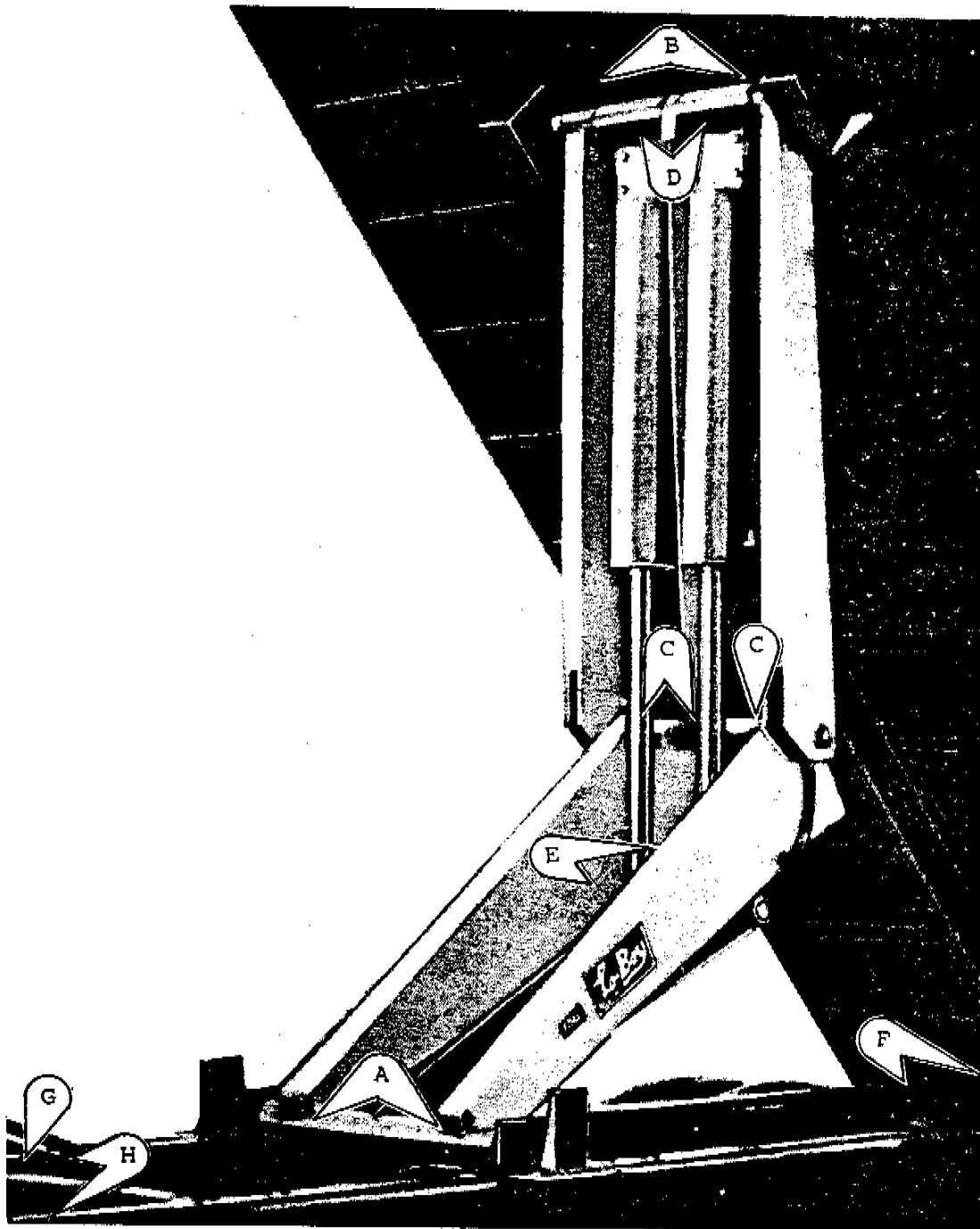
LUBRICATION INSTRUCTIONS

Install and lubricate grease zerks in the following locations:

- A - Truck mount pivot pin - - - 2 fittings
- B - Longbeam pivot pin - - - - 2 fittings
- C - Main center hinge - - - - - 3 fittings
- D - Cylinder base pivot- - - - 2 fittings
- E - Cylinder cross heads - - - 2 fittings
- F - Rear hinge - - - - - - - 2 fittings
- G - U-slip joint - - - - - - - 1 fitting
- H - Each U-joint - - 2 fittings (These are already installed)

Lubricate all fittings at regular intervals, at least each time the truck chassis is lubricated. There are tremendous forces on the bearing surfaces within the hoist frame, especially the main center hinge and cylinder crosshead. It pays to be generous with the grease gun, to insure proper operation and long life.

LO-BOY ST-560 TRUCK HOIST



LO-BOY ST-560 TRUCK HOIST

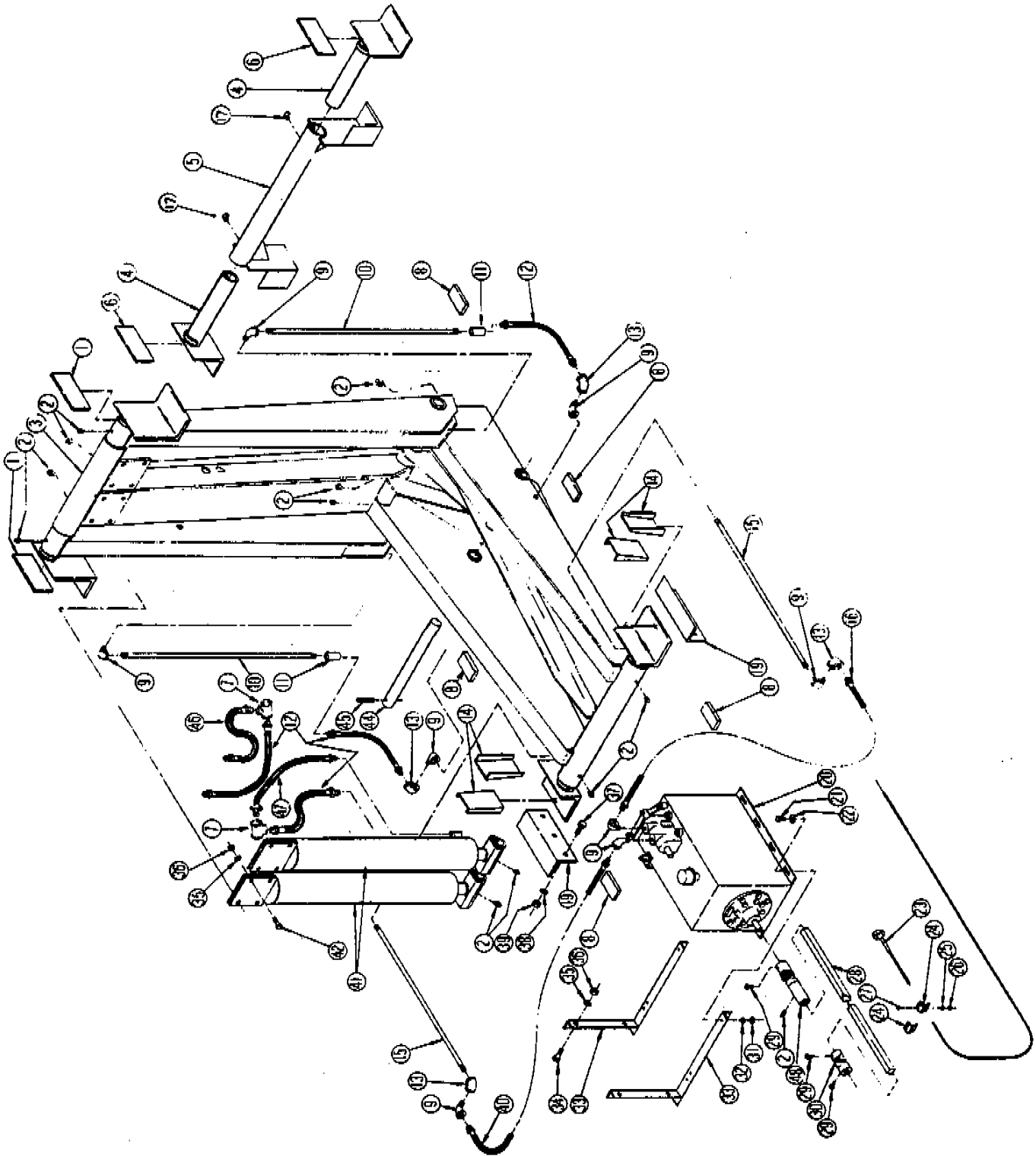
OPERATION AND USE

1. Engage PTO from cab and adjust engine speed to fast idle.
2. If hydraulic plumbing is correct, hoist should raise when pump knob is out, hold when knob is centered, and lower with knob in.
3. Cycle the hoist several times to remove air from the cylinder and hydraulic lines.
4. When hoist cylinder reaches the end of its stroke, oil will bypass through the relief valve. Do not permit this for any length of time as it places unnecessary strain on the hydraulic system. Put pump knob in hold position or disengage the PTO.
5. It is advisable to run the PTO to lower the hoist because this will act as a hydraulic lock to hold the hoist closed. It is not necessary to do this, however, because the reservoir has sufficient capacity whether you pump the oil back into the cylinders or not, but you will not benefit from the advantages of double action.
6. To make use of the hydraulic lock feature, place knob in center hold position after hoist is pumped all the way down. This places the pressure on the valve where it belongs, not on the pump.
7. DO NOT LEAVE THE PTO IN GEAR WHILE TRANSPORTING. THIS WILL CAUSE SEVERE DAMAGE TO THE HYDRAULIC PUMP AND/OR DRIVE LINE.
8. The hydraulic system should be drained, flushed, and refilled with proper hydraulic fluid at regular intervals.

CAUTION: NEVER USE HYDRAULIC BRAKE FLUID IN THE HYDRAULIC SYSTEM.

CAPACITY CHART FOR LO-BOY MODEL ST-560 HOIST				
Level Load Capacity in Tons				
The capacity of any hoist will vary according to the C.T. dimension of the truck, body length, rear overhang, and dump angle.				
C.T. length	Body length	Capacity 45°	Capacity 50°	Capacity 55°
102"	14'	27 tons	24 tons	22 tons
102"	15'	30	27	25
102"	16'	33	31	28
108"	15'	27	24	22
108"	16'	30	27	25
120"	16'	24	22	20
120"	17'	27	24	22
120"	18'	30	27	25
126"	17'	24	22	20
126"	18'	27	24	22
132"	18'	24	22	20
132"	20'	30	27	25
144"	18'	20	19	17
144"	20'	27	22	20
150"	20'	22	20	19
150"	22'	27	24	22
156"	20'	20	19	17
156"	22'	24	22	20

LO-BOY ST-560 TRUCK HOIST



LO-BOY ST-560 TRUCK HOIST

KEY NO.	PART NO.	DESCRIPTION	QUANTITY
1	310-06164	Flat spacer 3/8 x 2 x 7	2
2	100-03013	Grease fitting 1/8 -27 straight	11
3	320-06194	Main hoist frame	1
4	320-06213	Extension tube, rear hinge	2
5	320-06211	Rear hinge assembly	1
6	310-06163	Rear hinge spacer 3/8 x 3 x 7	2
7	260-03071	3/8 pipe tee	2
8	310-06161	Rivet clearance strip 1/2 x 2 x 4	6
9	260-03067	3/8 pipe 90 degree street elbow	8
10	275-03091	Hydraulic pipe 3/8 x 21 inch	2
11	260-03070	3/8 pipe coupling	2
12	270-03079	3/8 x 24 hydraulic hose SAE 100R2	4
13	260-03068	3/8 pipe 90 degree elbow	4
14	340-06152	Body guide	4
15	275-03094	Hydraulic pipe 3/8 x 39 inch	2
16	270-03081	3/8 x 36 hydraulic hose SAE 100R2	1
17	100-03270	1/8-27 90 degree grease fitting	2
19	340-06117	Mounting angle	2
20	250-03059	8 GPM hydraulic pump & reservoir-1 valve	1
21	100-03009	3/8 x 7/8 N.C. cap screw	4
22	110-03023	3/8 flat washer	4
23	050-03003	Pump control cable, 12 foot	1
24	340-06132	Dash control mounting angle	2
25	110-03022	1/4 lock washer	4
26	120-03028	1/4 N.C. hex nut	4
27	100-03010	1/4 x 3/4 N.C. cap screw	4
28	305-06002	PTO driveshaft, 7/8 sq. x 4 ft.	1
29	100-03012	3/8 x 1/2 N.C. setscrew, drilled head	3
30	300-03096	Standard short U-joint	1
31	120-03027	3/8 N.C. hex nut	4
32	110-03021	3/8 lock washer	4
33	320-06199	Pump mounting angle	2
34	100-03008	1/2 x 1-1/2 N.C. cap screw	4
35	110-03020	1/2 lock washer	12
36	120-03026	1/2 N.C. hex nut	12
37	100-03007	5/8 x 1-3/4 N.C. cap screw	6
38	110-03019	5/8 lock washer	6
39	120-03025	5/8 N.C. hex nut	6
40	270-03082	3/8 x 42 hydraulic hose, SAE 100R2	1
41	320-06233	Hydraulic cylinder assembly	2
42	100-03014	1/2 x 1-3/4 N.C. cap screw	8
44	330-06069	Cylinder crosshead shaft	1
45	130-03033	1/2 x 2-1/2 roll pin	1
46	270-03078	3/8 x 18 hydraulic hose, SAE 100R2	1
47	270-03080	3/8 x 30 hydraulic hose, SAE 100R2	1
48	300-03102	Long U-slip joint	1

LO-BOY ST-560 TRUCK HOIST

<u>OPTIONAL PARTS LIST</u>			
<u>PART NO.</u>	<u>DESCRIPTION</u>	<u>REPLACES KEY NO.</u>	<u>QUANTITY</u>
050-03004	Pump control cable 15 foot	23	1
250-03060	Hyd. pump & res. 8 GPM 2 valves	20	1
250-03061	Hyd. pump & res. 12 GPM 1 valve	20	1
250-03062	Hyd. pump & res. 12 GPM 2 valves	20	1
270-03087	Hyd. hose extension 12 inch long		2
270-03088	Hyd. hose extension 24 inch long		2
270-03089	Hyd. hose extension 42 inch long		2

SOME DO'S AND DON'TS FOR SAFETY AND LONG SERVICE LIFE

1. Use the proper hydraulic fluid. KEEP IT CLEAN. Remember to change it regularly. (See page 6)
2. Lubricate all grease fittings at regular intervals. (See page 9)
3. ALWAYS CAREFULLY BLOCK UP THE HOIST BEFORE WORKING UNDER IT.
4. Do NOT race the engine when unloading.
4. Do NOT overload the hoist beyond its capacity.
6. DO NOT TAMPER WITH THE HYDRAULIC RELIEF VALVE. This will void the warranty. It can cause severe damage to hoist and cylinder.
7. NEVER LEAVE THE PTO IN GEAR WHILE TRANSPORTING. IT WILL RUIN THE HYDRAULIC PUMP.
8. Check all bolts and setscrews regularly. Keep them tight.

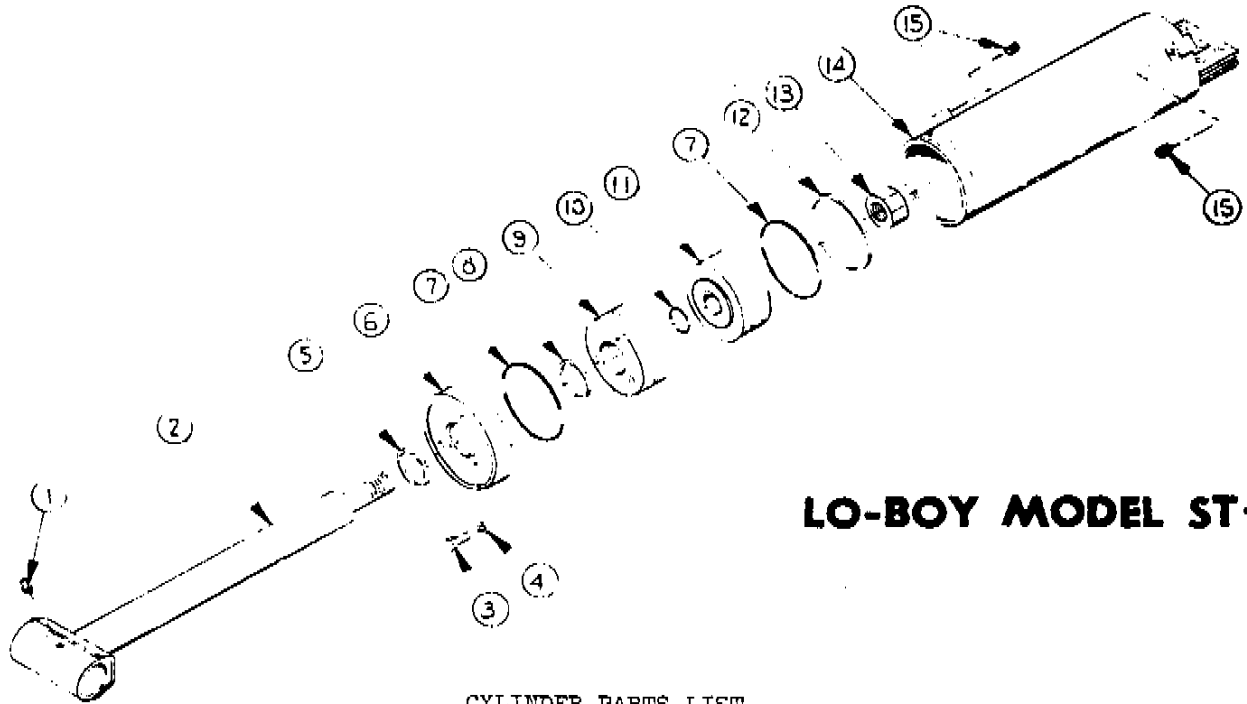
CAPACITY FORMULA FOR LO-BOY MODEL ST-560 HOIST

To determine the capacity of the Lo-Boy Model ST-560 hoist for applications other than those shown on the capacity chart, use the following formula:

- (1) Measure the distance in inches from center of the rear hinge pin to the center of the body. Call this dimension "A".
- (2) Measure the distance in inches as shown on page 3, from the center of the rear hinge pin to the center of lift point. This is dimension "D".
- (3) Multiply dimension "D" by 25.
- (4) Divide this total by dimension "A". Result will be the level load capacity of the hoist in thousands of pounds, including body weight.

CRYSTEEL MANUFACTURING, INC.

Highway 60 East
LAKE CRYSTAL, MINNESOTA 56055



LO-BOY MODEL ST-560

CYLINDER PARTS LIST

MODEL ST-560 (SERIAL NUMBER 2-560-001 AND UP)

KEY NO.	PART NO.	DESCRIPTION	QUANTITY
1	100-03013	Grease Zerk, 1/8-27 NPT	1
2	320-06235	Cylinder Shaft Assembly	1
3	100-03018	3/8 x 1 1/2 Cap Screw	3
4	110-03021	3/8 Lock Washer	3
5	150-03044	Wiper Seal, 2 inch	1
6	320-06232	Cylinder Cap Assembly	1
7	150-03042	O-Ring, 4 1/2 x 5, Piston Seal and Head Seal	2
8	150-03041	Moly Seal, 2 x 2 1/2	1
9	450-06250	Head	1
10	150-03043	O-Ring, 1 1/2 x 1 5/8	1
11	450-06247	Piston	1
12	150-03040	Moly Seal, 4 1/2 x 5	1
13	120-03029	1 1/2 -12 NF. Lock Nut	1
14	320-06234	Cylinder Tube Assembly	1
15	260-03252	3/8 Steel Pipe Plug	2

 LO-BOY MODEL ST-560 HOIST

12 VOLT ELECTRIC HYDRAULIC POWER UNIT

Special Instructions to Install Monarch Electric pumps with Model 445, 545, 645, 655, and ST-560 Lo-Boy hoists.

1. Mount pump unit just ahead of hoist between frame rails of truck or trailer.
2. Mount control cable under the dash or in a convenient place in the cab. For trailers, mount control cable to a suitable bracket near front of trailer. Connect cable to pump valve control with small parts supplied.
3. Mount push-button switch just above control cable so one hand can operate both cable and push button.
4. The solenoid on the MONARCH pump will energize the pump motor when the small terminal on the solenoid is grounded. Connect one terminal of the push-button switch to ground, and the other terminal to the solenoid. Connect battery cable to the heavy terminal on the solenoid. For trailers, use a heavy duty coupler of the type used for welding cable extensions to disconnect the battery cable at the trailer hitch.
5. For trailers, install a separate heavy duty ground cable that can be disconnected at the trailer hitch. DO NOT depend on the hitch to carry the ground connection.
6. IMPORTANT - On all electric installations install a heavy duty ground cable from the truck battery direct to the truck frame. The light cable normally used from the engine to the frame is not heavy enough. Recommended battery cable size is No. 0. Never, under any circumstance, use cable lighter than No. 1.

Monarch Model 310 - Double acting (2 types)
 12" reservoir (445), 3 gal. approx., 3600 P.S.I.
 22" " 545 through ST-560, 6 gal. approx.,
 3250 P.S.I.

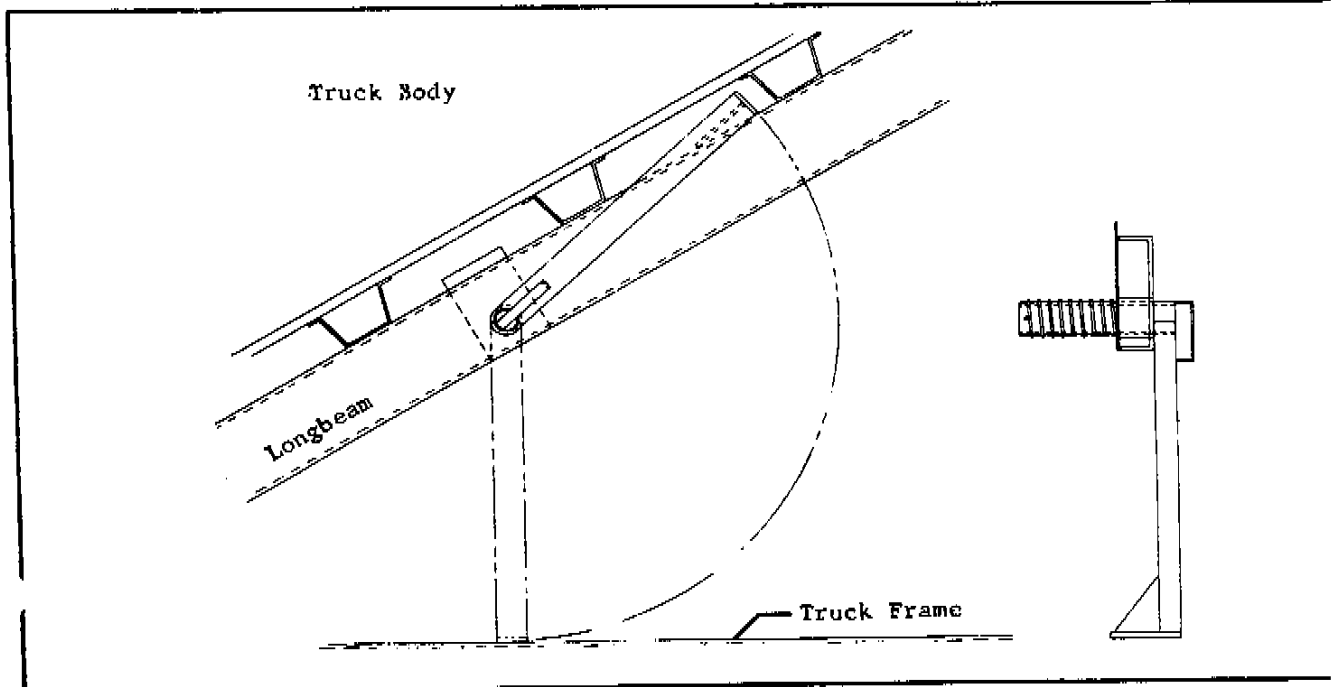
CRYSTEEL TRUCK BODY PROP

Crysteel's Truck Body Prop is designed and intended for use to support an empty truck body in the raised position to permit service work to be performed safely beneath a raised body. As a general rule, one prop will support a dump body of 12 feet or less in length, or a farm type body of 16 feet or less. With longer bodies two props should be used, one on each side. The Truck Body Prop is adaptable for use with any conventional body with six inch through nine inch longbeams and three inch or higher crossmembers.

Installation of Truck Body Prop

Refer to cross-sectional drawings as shown below:

1. Raise body to desired height and brace it securely or support it with overhead equipment before beginning installation.
2. Position body prop arm pad on top of longbeam between body crossmembers a few feet ahead of rear hinge, so that the operator will be just ahead of rear wheels when reaching for body prop handle; or with tandem axle trucks, he will be between the tandem axles.
3. Position pivot end of prop arm against longbeam near the bottom flange and mark the approximate center of pivot hole. Make sure that prop arm will clear top of truck frame by at least two inches when swung into support position later.
4. Use support bracket as a template to mark location of hole to be cut in longbeam.
5. Torch-cut hole in longbeam and weld support bracket and tube assembly to inside of longbeam and around tube, both inside and outside of longbeam.
6. Install prop arm assembly through support bracket tube from the outside, slide spring into place and install roll pin to hold spring in place.
7. Pull on handle of prop arm to compress spring and apply light coating of grease to lubricate pivot tube.
8. To operate Truck Body Prop, raise body to desired height, shut off all power, grasp prop handle at arms length and pull to compress spring. Prop arm will swing down by gravity, and spring will pull prop into support position. Lower body slowly until prop contacts truck frame. **DO NOT POWER HOIST DOWN!!!!!!!!!!**
9. To place Truck Body Prop in storage position simply reverse the above procedure.



CRYSTEEL MANUFACTURING, INC.

LO-BOY ST-560 TRUCK HOIST

WARRANTY

WARRANTY

Crysteel Manufacturing, Inc., warrants its products for a period of one year from date of purchase.

The warranty provides that our products must perform satisfactorily or we will repair, replace, or refund the purchase price at the option of the purchaser. Hydraulic pumps, valves, hoses, and other purchased parts are covered by the warranties of their respective manufacturers.

Any parts returned to Crysteel Manufacturing, Inc. shall be shipped prepaid, and will be returned F.O.B. Lake Crystal, Minnesota.

We will not assume responsibility for shipping, labor, or travel expenses.

The warranty is void if the product has been obviously abused, or subjected to other than normal usage.

We reserve the right to make improvements without notice or obligation regarding models previously sold.

*SPECIALLY DESIGNED —
WITH QUALITY IN MIND*

CAUTION

- BODY MUST BE BRACED BEFORE SERVICING HOIST OR WORKING IN AREA WITH BODY IN RAISED POSITION
- LUBRICATE HOIST GREASE FITTINGS OFTEN - AT LEAST EACH TIME TRUCK IS SERVICED
- TRUCK MUST BE LEVEL FOR DUMPING
- DO NOT OVERLOAD

CRYSTEEL MFG., INC.



HIGHWAY 60 EAST • LAKE CRYSTAL, MINNESOTA 56055 • TELEPHONE 507-726-2728