



SELECT

MEDIUM & HEAVY DUTY
DUMP BODIES



CONTRACTORS

ASPHALT

PUBLIC WORKS

DEMOLITION

GENERAL



www.CRYSTEEL.com





SELECT

SELECT CUSTOM DUMP BODY PROGRAM

Crysteel's exclusive "Build it Your Way" program is more than just a concept — it's a customer-driven ordering system that makes manufacturing to specific requests a reality.

The Select Body program allows you to essentially design your own dump body without incurring the extra cost and time normally associated with custom designed products. You can design a dump body best suited for your application in a 5-through 20-cu yd capacity. Crysteel offers body lengths in 6-inch increments. Adjust your front, side and rear heights in 2-inch increments.

Choose between traditional square body styles or elliptical bodies, and then choose the best steel to fit your specific application. Front body choices include sloped front, straight front or bailmount design. Rear choices range from asphalt, sloped, and power tailgate designs. And even more choices are available!

All Select dump bodies include the most comprehensive warranty in the truck equipment industry. Crysteel's Customer Satisfaction Pledge covers new products for a period of five (5) years, and is not restricted by vehicle mileage.

Get your job done right with a Select dump body from Crysteel.

VOCATIONAL STEEL

Selecting the proper steel to build your dump body is extremely important to the performance of your body. Steel comes in many strengths and thickness and it is important to know that thicker is not always better.

The high strength steels available allow the use of thinner materials that have higher yield ratings to add strength and can reduce body weight significantly. Lighter, stronger bodies increase body life, payload capacity, and hauling revenues. Build your body your way to best fit your applications.

| Yield Strength Value at given thickness | Typicals | | | | | Available Steel with Crysteel Select Bodies | | | |
|---|-----------|-------------|---------------|---------|--------------------------|---|-------|------|-------|
| | Thickness | Yield (psi) | Tensile (psi) | Brinell | Type of Steel | Front | Sides | Rear | Floor |
| 4,707.50 | 10 ga | 35,000 | 85,000 | 180 | Stainless Steel | x | x | x | x |
| 6,275.50 | 7 ga | 35,000 | 85,000 | 180 | Stainless Steel | x | x | x | x |
| 6,725.00 | 10 ga | 50,000 | 65,000 | 143 | A1011 GR50 (X-Ten) Steel | x | x | x | x |
| 8,750.00 | 1/4" | 35,000 | 85,000 | 180 | Stainless Steel | x | x | x | x |
| 8,965.00 | 7 ga | 50,000 | 65,000 | 143 | A1011 GR50 (X-Ten) Steel | x | x | x | x |
| 11,960.00 | 11 ga | 100,000 | 110,000 | 250 | 100XF Steel | | x | x | |
| 12,500.00 | 1/4" | 50,000 | 65,000 | 143 | A1011 GR50 (X-Ten) Steel | x | x | x | x |
| 16,440.00 | 8 ga | 100,000 | 110,000 | 250 | 100XF Steel | x | x | x | |
| 21,875.00 | 1/8" | 175,000 | 205,000 | 450 | AR450 Steel | | x | | |
| 27,115.00 | 3/16" | 145,000 | 180,000 | 450 | AR450 Steel | x | x | x | x |
| 36,250.00 | 1/4" | 145,000 | 180,000 | 450 | AR450 Steel | x | x | x | x |

Specifications subject to change.

BODY STYLE OPTIONS

PARADOX SELECT

- 8" radius corners formed between floor and sidewalls to reduce hang up of material
- Lower load center of gravity



RAPTOR SELECT

- Smooth, streamline style
- 18" radius opening offers easy clean-out
- Elliptical design resists denting with less flat surface for material to hit



FRONT OPTIONS

- Sloped front
- Straight front
- Bailmount



Sloped front design allows for far forward mounting of the dump body while providing a convenient area for reservoir and toolbox.



Bailmount front completely eliminates the doghouse for excellent clean-out and increases capacity.

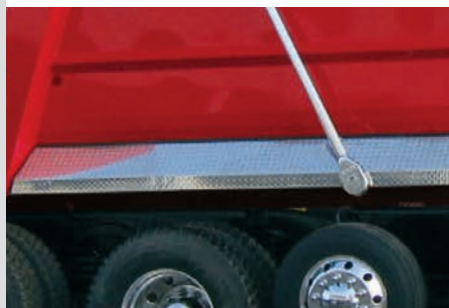
SIDE OPTIONS

Elliptical

- Sloping sides
- Tarprail (upper and lower)
- Fenders (aluminum or steel)
- Ladder (rigid or folding)

Traditional (square)

- Sloping sides
- Tarprail (upper and lower)
- Front contoured corner posts
- Single Panel (with or without fender)
- Double Panel
- Vertical and/or horizontal side braces
- Ladder (rigid or folding)



Full length aluminum fenders are a great side option to save weight while providing a stylish look.



Sloping sides eliminate the need for sideboards and offer better weight distribution by allowing more payload at the front of the body.

REAR OPTIONS

- Asphalt rear
- Sloped rear
- Straight rear
- Power tailgate (hydraulic or air)
- Tailgate release (manual or air)
- Patchgate (sliding)
- Multiple rear light configurations
- Tailgate hardware (7" or 12" offset or double link)
- Tailgate bracing (horizontal, vertical, full rib)



Asphalt tailgate eliminates the need for a spreader apron and allows you to pull away from the paving unit while the body is raised.



Straight rear with horizontal and vertical tailgate braces.



Power tailgate creates an opening 18" higher than tailgate itself.



Traditional sliding rear patchgate features easy operation.

HIGH 'N SLIDE™

Multi-Function Tailgate

Exclusive, Patent #8,414,083

- Traditional dump-through
- Sliding
- High-lift



Performs like a standard tailgate and a high-lift tailgate, will also slide in tracks to allow metering of asphalt and spreading of gravel.

UNDERSTRUCTURE OPTIONS

- Western Tubular (heated or non-heated) understructure
- Western I-Beam understructure
- Interlocking understructure



Western Tubular understructure offers easy cleanup and maintenance with less material hang up.



Traditional interlocking understructure for added strength and rigidity.

ADDITIONAL OPTIONS

- Cabshields
- Pull or Electric Asphalt Tarp
- Solid Poly Side Boards
- Spillshields
- Poly Fenders
- Vibrator (installed)
- Steps inside body
- Sloped front toolbox
- Back-up alarm
- Body up light kits
- LED lights



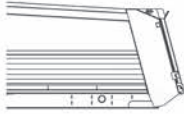
CRYSTEEL

HAS THE BODY FOR YOU

ASPHALT CONTRACTORS

As an Asphalt contractor you need functionality and versatility in the dump body you use. Crysteel offers you both the ability to custom design your body with features like a sloped front that promotes better clean out, as well as an asphalt rear that allows you to pull away from a paver box without lowering your body. Being functionally efficient on the job saves time and improves profit margins.

Asphalt/Sloped Rear



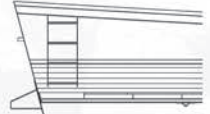
Heated Floors



Asphalt Apron



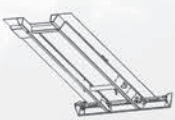
Sloped Front



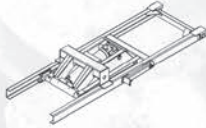
PUBLIC WORKS CONTRACTORS

Providing a clear and concise set of equipment specifications is the key to getting the versatile dump body you need for your fleet. Crysteel can help you develop that perfect body and hoist specification by providing you with key information on different body styles, features and options, plus help you with the types of steel that you need to best deal with the different materials you haul.

Western Understructure



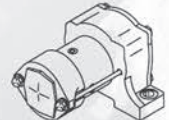
Roller Combo Hoist



Power High-Lift Tailgate



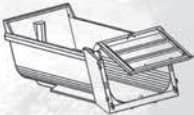
Vibrator



DEMOLITION CONTRACTORS

Designing a dump body to hold up to the rigors of large rock, concrete chunks with rebar, and construction rip-rap requires a little planning and forethought. Crysteel dump bodies can be designed and built to stand up to the toughest stuff you can dish out. All this without sacrificing good looks for performance.

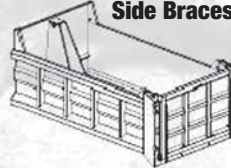
Elliptical



Power High-Lift Tailgate



Vertical & Horizontal Side Braces



Double Panel Tailgate



GENERAL CONTRACTORS

You may never know from one day to the next what you might need your dump body to haul. Being able to design a dump body that will handle the tougher loads, yet lighter where it can be, allows you to keep the weight down to maximize the hauling capacity of lighter aggregates. Keeping your costs in line without sacrificing performance can be a challenge, but Crysteel can help you customize a dump body that will fit your application.

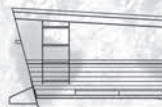
Sloped Sides with Horizontal Side Brace



Sloped/Asphalt Rear



Sloped Front



Vertical Side Braces





The patented Roller Combo hoist is designed to provide more power at breakaway and has power to spare at the end of the cycle.

ROLLER COMBO™ (UNDERBODY WITH SUBFRAME)

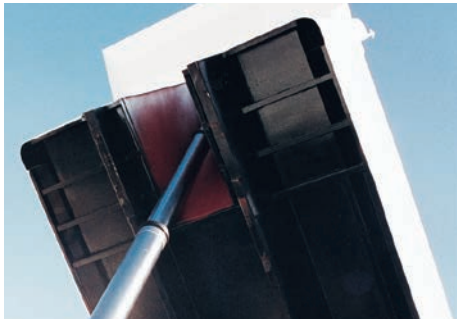
| Model | NTEA Class | Dump Body Sizes (ft) | Hoist Capacity Range (tons) | Maximum Operating Pressure (PSI) | Std. Pump GPM @ 1000 RPM | Std. Reservoir Size (gal.) | Approx. Weight (lbs.) |
|--------|------------|----------------------|-----------------------------|----------------------------------|--------------------------|----------------------------|-----------------------|
| RC540 | 40 | 8 - 10 | 13.8 - 18.4 | 3250 | 6 | 10 | 745 |
| RC650 | 50 | 8 - 11 | 17.7 - 26.6 | 3250 | 6 | 10 | 770 |
| RC750 | 50 | 9 - 11 | 15.3 - 19.7 | 2000 | 10 | 10 | 795 |
| RC860 | 60 | 9 - 12 | 17.9 - 25.7 | 2000 | 10 | 10 | 830 |
| RC690 | 90 | 12 - 16 | 24.3 - 34.0 | 2200 | 15 | 18 | 1850 |
| RC6100 | 100 | 14 - 17 | 27.8 - 34.8 | 2700 | 15 | 18 | 1850 |



Marathon Telescopic hoist offers powerful lifting without wasted doghouse space. Features no-bleed cylinders.

MARATHON TELESCOPIC (TRUNNION MOUNTED)

| Model | NTEA Class | Dump Body Sizes (ft) | Hoist Capacity Range (tons) | Maximum Operating Pressure (PSI) | Std. Pump GPM @ 1000 RPM | Std. Reservoir Size (gal.) | Approx. Weight (lbs.) |
|--------|------------|----------------------|-----------------------------|----------------------------------|--------------------------|----------------------------|-----------------------|
| M5390 | 70 | 9 - 10 | 29.8 - 36.8 | 2500 | 10 | 16 | 650 |
| M5399 | 70 | 11 | 27.5 | 2500 | 15 | 16 | 690 |
| M53117 | 80 | 12 - 13 | 24.9 - 28.3 | 2500 | 15 | 23 | 780 |
| M63138 | 120 | 14 - 15 | 42.0 - 46.4 | 2500 | 20 | 28 | 890 |
| M63153 | 120 | 16 | 41.8 | 2500 | 20 | 28 | 950 |



The Turbo Telescopic hoist is known for its high quality and reliability. Features no-bleed cylinders.

TURBO TELESCOPIC (CONVENTIONAL MOUNT)

| Model | NTEA Class | Dump Body Sizes (ft) | Hoist Capacity Range (tons) | Maximum Operating Pressure (PSI) | Std. Pump GPM @ 1000 RPM | Std. Reservoir Size (gal.) | Approx. Weight (lbs.) |
|--------|------------|----------------------|-----------------------------|----------------------------------|--------------------------|----------------------------|-----------------------|
| T5380 | 60 | 9 - 10 | 23.1 | 2500 | 10 | 16 | 713 |
| T5398 | 70 | 11 - 12 | 22.8 - 25.4 | 2500 | 15 | 16 | 817 |
| T53114 | 70 | 13 - 14 | 22.5 - 24.6 | 2500 | 15 | 16 | 840 |
| T63113 | 110 | 13 - 14 | 36.4 - 39.7 | 2500 | 20 | 28 | 867 |
| T63131 | 110 | 15 | 37.4 | 2500 | 20 | 28 | 900 |
| T63148 | 120 | 16 - 17 | 36.2 - 38.8 | 2500 | 20 | 28 | 930 |
| T73129 | 120 | 15 | 56.6 | 2500 | 25 | 40 | 1010 |
| T73147 | 120 | 16 - 17 | 56.4 - 60.4 | 2500 | 25 | 40 | 1042 |
| T74167 | 120 | 18 - 19 | 39.0 - 41.4 | 2500 | 25 | 40 | 1096 |
| T74191 | 120 | 20 - 21 | 39.5 - 41.7 | 2500 | 25 | 40 | 1128 |

Specifications subject to change.



CRYSTEEL MANUFACTURING, INC.

Lake Crystal, MN • 1-800-533-0494 • FAX 507-726-2559
www.crysteel.com • E-mail sales@crysteel.com



Every body and hoist is backed by Crysteel's industry-leading **5-year Customer Satisfaction Pledge**. For more information on Crysteel's 5 Year Warranty, please ask your Crysteel Distributor or visit us at www.crysteel.com.



Sold by: